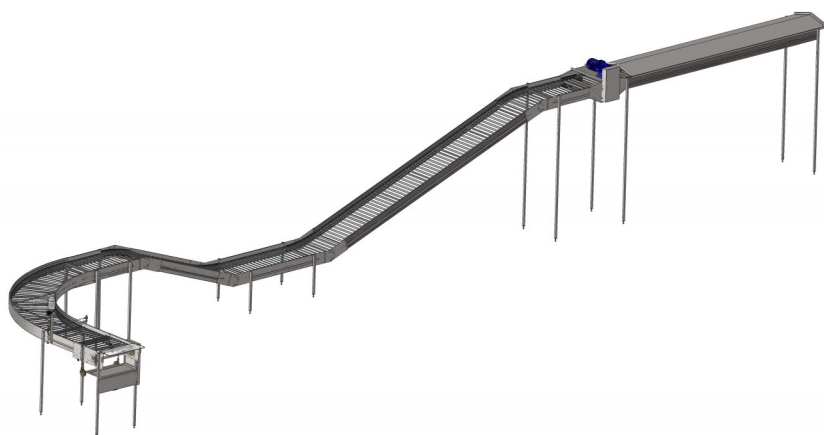


Farmtec Egg Conveyors

Farmtec egg conveyors for breeders and layers in any kind of poultry housing system.

With our range of conveyor widths that makes egg transport up to 72.000 eggs / hour possible, we can provide you with a solution for every farm layout. The galvanized rods with a small contact surface ensure clean eggs and allow gentle guiding of the eggs sideways for an optimum system capacity and a high percentage of first grade eggs. Depending on the total length of the conveyor system the front drive will be the main drive and optionally be supported by an end drive or one or more intermediate drive units. The different drive units can be combined with all of our conveyor types/widths, curves, slopes and lift systems.

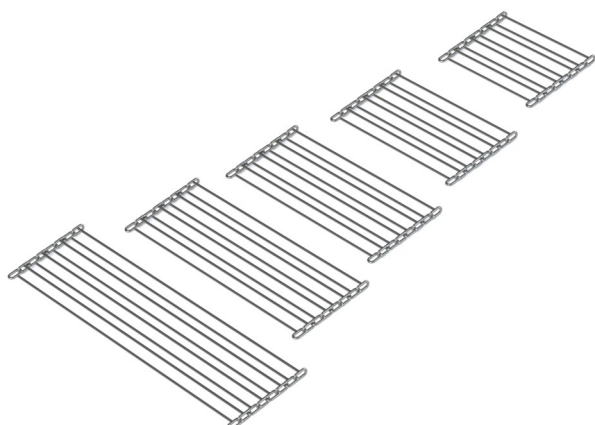


Advantages of Farmtec Egg Conveyors

- Lightweight aluminium frame
- Strong and rigid frame
- Available as suspended or supported system
- Easy installation
- Modular system
- Pre-assembled components
- Durable materials
- Brightly galvanized rods for a long-life span
- Easy to clean and maintain
- Optimum system capacity

Egg Conveyor accessories

- Front drive unit
- Intermediate drive unit
- End drive unit
- Egg guide strip
- Slope assembly (up to 40 degrees)
- Curves in various degrees
- Automatic oil dispenser
- Top cover
- Dirt collection belt
- Short intermediate conveyor
- Adjustable galvanized legs in multiple lengths
- Lift system for egg conveyor



Chain widths

- 30 cm
- 40 cm
- 50 cm
- 60 cm
- 80 cm

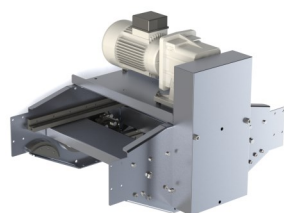
Chain types

- Flat (spb)
max 15 degrees
- Stepped (spbv)
max 20 degrees
- Extra stepped (spbev)
max 40 degrees



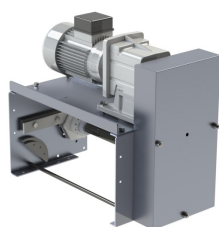
Front drive unit

- Can be mounted in a slope up to 20 degrees
- Gentle egg transfer to packer
- Spring-loaded chain tensioner



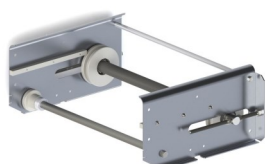
Intermediate drive unit

- Allows longer system configurations
- Drives upper or lower chain
- Multiple intermediate drives in one system supported



End drive unit

- Combined with front drive
- Available as short drive unit variant
- No need for idler unit



Idler unit

- Adjustable chain tensioner
- Simple and safe alignment of conveyor chain
- Configurable with additional vertical tensioner

Technical specifications egg conveyors

Usable width	30 cm.	40 cm.	50 cm.	60 cm.	80 cm.
Frame lxbxw (cm.)	300x35x14	300x45x14	300x55x14	300x65x14	300x85x14
Conveyor speed	5 meters per minute				
Max. capacity type flat (spb)	25.000 eggs/hr	36.000 eggs/hr	45.000 eggs/hr	54.000 eggs/hr	72.000 eggs/hr
Max. capacity type stepped (spbv)	25.000 eggs/hr	36.000 eggs/hr	45.000 eggs/hr	54.000 eggs/hr	72.000 eggs/hr
Max. capacity type extra stepped (spbev)	-	25.000 eggs/hr	36.000 eggs/hr	45.000 eggs/hr	63.000 eggs/hr
Motor drive unit	400V-3 phase-50 cycles-0,37KW				
Outer radius curve	115 cm.	153 cm.	188 cm.	224 cm.	297 cm.
Length drive unit	32 or 53 cm.				
Finish	Aluminum frame / smoothly galvanized chain				

About Farmtec

Farmtec is a Dutch company, established in 1979 and since 2017 part of The Smart Farming Company. We are active in egg collection systems and egg conveyors throughout our worldwide distributors network. We focus on designing, manufacturing and delivery of professional egg collection systems and egg conveyors for modern poultry farms.

Europaweg 22
8181 BH Heerde
The Netherlands

| T: +31 (0) 578 69 20 61
| E: info@farmtec.com
| W: www.farmtec.com